

**Mission To Provide People With Opportunities  
To Build a Better Future**

Welcome to the World of  
Steady GROWTH



# Welcome to Microsoft Power BI Awareness Session

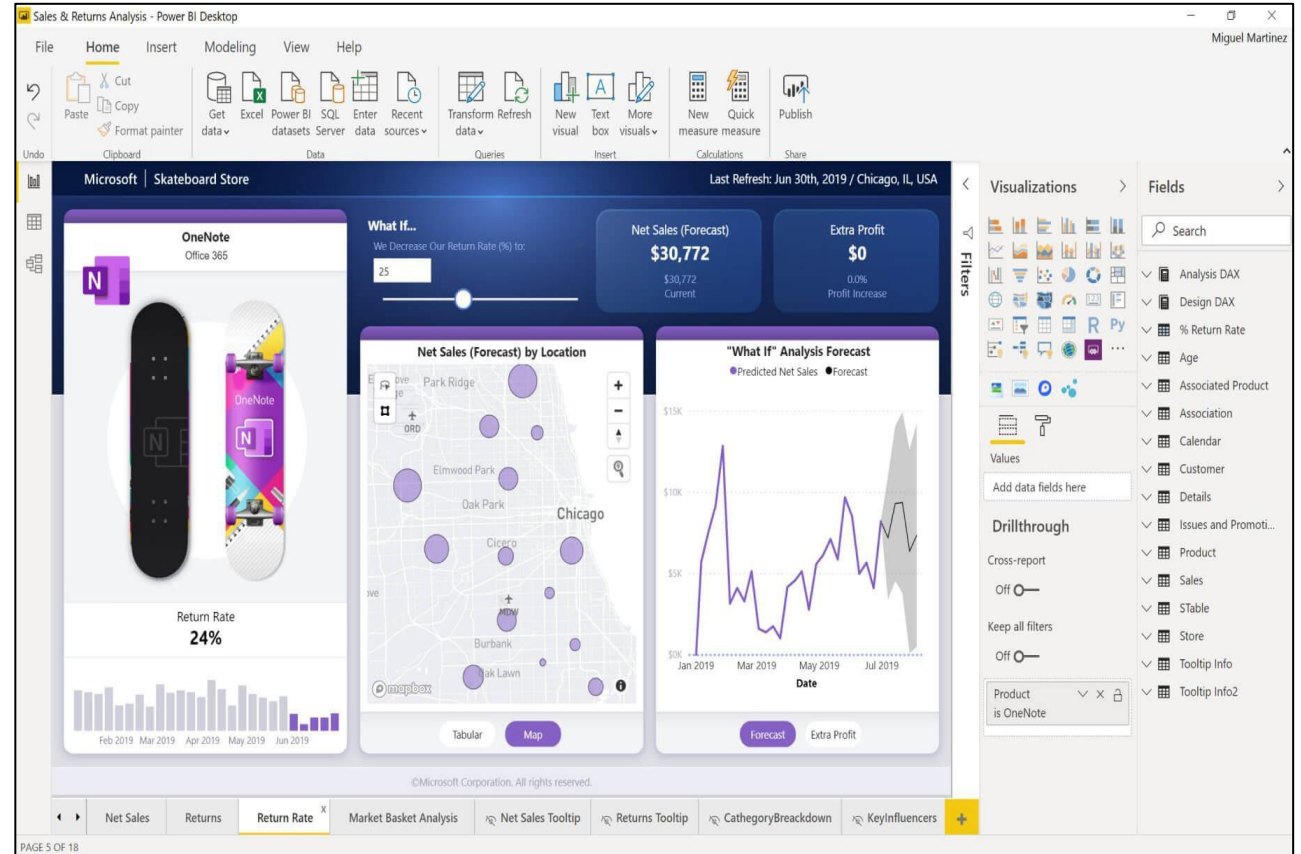


Session will start @11:10 am

**Note** : Participants are requested to rename their device names to match the name you registered with.

# What is Power BI?

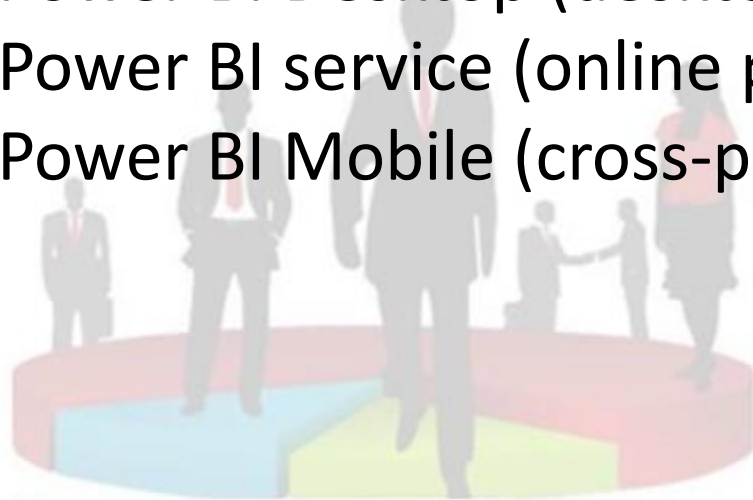
- ✓ Power BI is a business analytics tool which is developed by **Microsoft** and is used to create interactive & visually appealing reports & dashboards from your data.
- ✓ Power BI can scale from simple reports using a single data source to reports requiring complex data modeling and consistent themes.



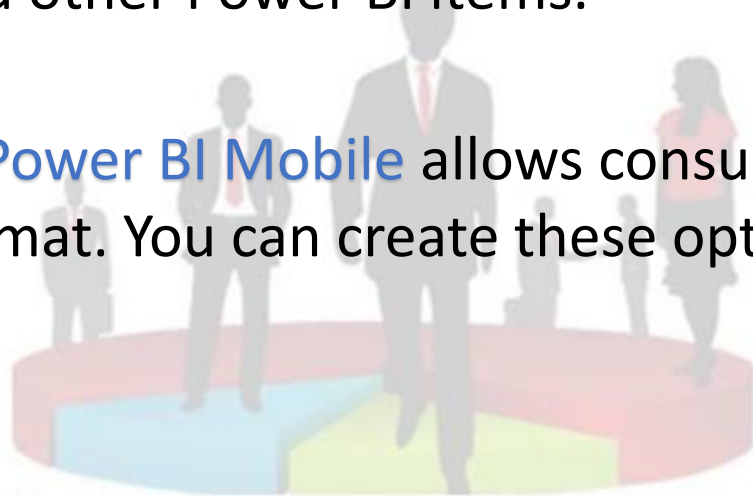
## Use of Power BI?

In order to create reports with Power BI, you must first understand the necessary tools. There are three primary components to Power BI:

- Power BI Desktop (desktop application)
- Power BI service (online platform)
- Power BI Mobile (cross-platform mobile app)



1. **Power BI Desktop** is the development tool available to data analysts and other report creators. Power BI Desktop is available to download for **free** either through the Windows store or directly online.
2. **Power BI Service** allows you to organize, manage, and distribute your reports and other Power BI items.
3. **Power BI Mobile** allows consumers to view reports in a mobile-optimized format. You can create these optimized report views in Power BI Desktop.



## Core Responsibilities of BA

- **Requirements gathering** (communicating with stakeholders)
- **Working on the documents** (document & prioritize these requirements to ensure they align with business objectives)
- **Process Re-engineering** (rethinking and redesigning the business processes, organizations can achieve significant enhancements in efficiency, quality, and customer satisfaction)

## Supporting Responsibilities of BA -

- **Reports Generation & creation** - Create custom reports tailored to specific business needs and stakeholder requirements.
- **Assisting the Team** - Training and Knowledge Sharing  
Sharing best practices for report design, data visualization, and data analysis to enhance team capabilities.



## What is Business Intelligence?

Business Intelligence is a set of processes, architectures, and technologies that convert raw data into meaningful information that drives profitable business actions.

### Uses

BI tools perform data analysis and create reports, summaries, dashboards, maps, graphs, and charts to provide users with detailed intelligence about the nature of the business.





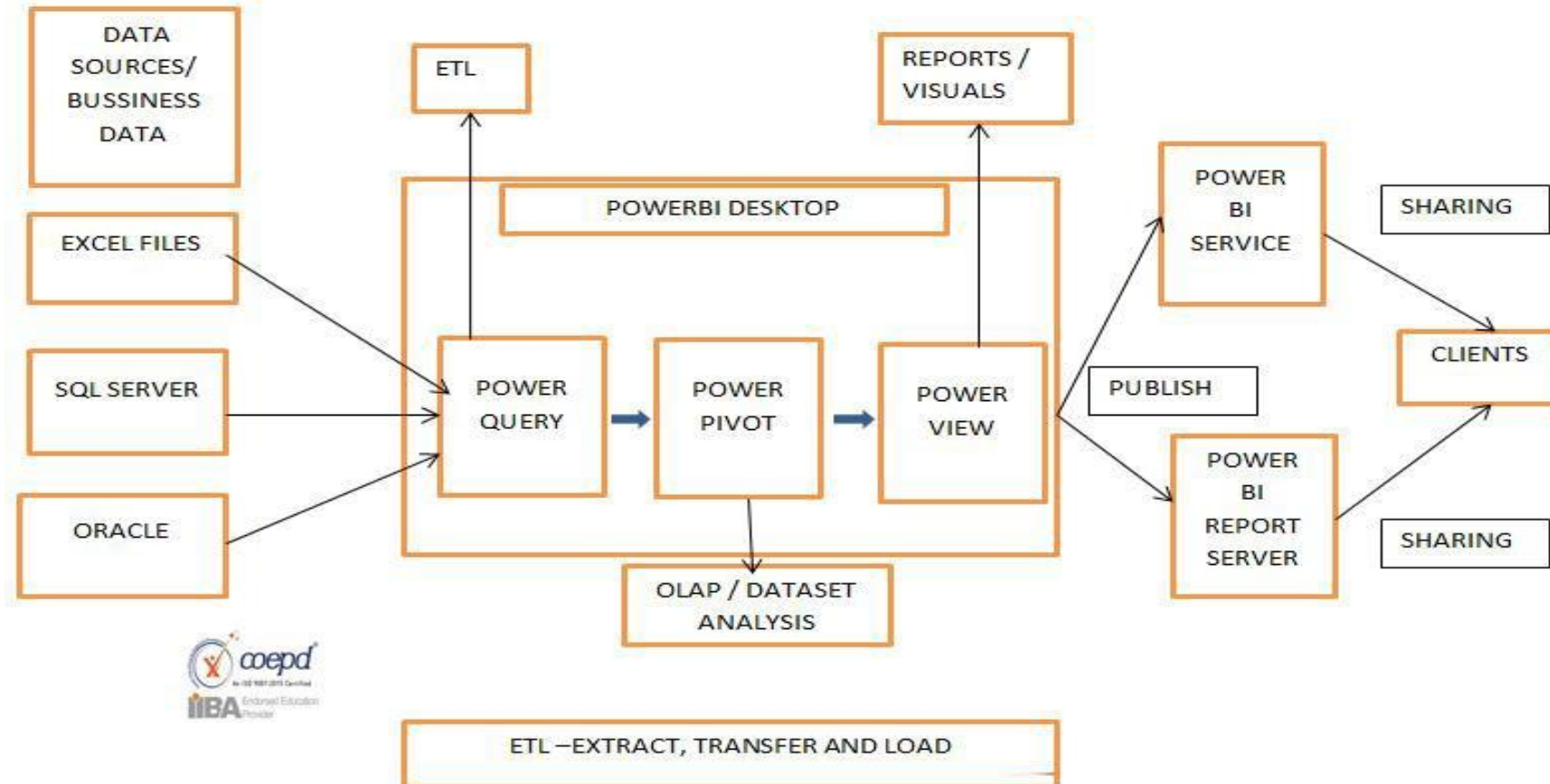
## How are Bi tools useful to a Business Analyst?

- **Data Visualization** - present data in visual format to understand easily.
- **Data Exploration** - Investigating and understanding data.
- **Self-Service Analytics** - Empowering users to access and analyze data without needing assistance.
- **Data Integration** - Combining data from different sources into a unified view for analysis.
- **Data Quality and Cleansing** - Ensuring data accuracy, consistency and completeness.
- **Time Efficiency** - Maximizing the speed and efficiency of processes.
- **Predictive Analytics** - forecast future trends or outcomes based on historical data.
- **Performance Monitoring** - Tracking and assessing the Performance.
- **Cost Savings** - Reducing expenses or resource utilization.
- **Compliance and Security** - adherence to regulatory requirements and protecting data.
- **Continuous Improvement** - services based on data-driven insights and feedback.

## Power BI Vs Tableau

Aspect	Power BI	Tableau
<b>Company</b>	Developed by Microsoft	Developed by Tableau Software
<b>Cost</b>	Offers both free and paid versions	Primarily subscription-based
<b>Ease of Use</b>	Generally more user-friendly, especially for Excel users	Known for intuitive drag-and-drop interface
<b>Data Connectivity</b>	Strong integration with Microsoft products (Excel, SQL Server, etc.)	Offers a wide range of connectors to various data sources
<b>Visualizations</b>	Provides a good range of visuals and customizations	Known for its extensive and advanced visualization options
<b>Mobile Experience</b>	Offers good mobile support with responsive designs	Provides native mobile apps for better mobile experience
<b>Collaboration</b>	Integration with Microsoft Teams for collaboration	Allows for easy sharing and collaboration within the platform
<b>Community Support</b>	Large community and extensive online resources	Strong user community and active forums for support
<b>Learning Curve</b>	Relatively easier learning curve for beginners	May have a steeper learning curve for advanced features

# POWER BI ARCHITECTURE



# To work on Power BI we require DATA

We can choose/import DATA from different data reservoir software....

## Get Data

All

File

Database

Power Platform

Azure

Online Services

Other

- Excel Workbook
- Text/CSV
- XML
- JSON
- Folder
- PDF
- Parquet
- SharePoint folder
- SQL Server database
- Access database
- SQL Server Analysis Services database
- Oracle database
- IBM Db2 database
- IBM Informix database (Beta)
- IBM Netezza

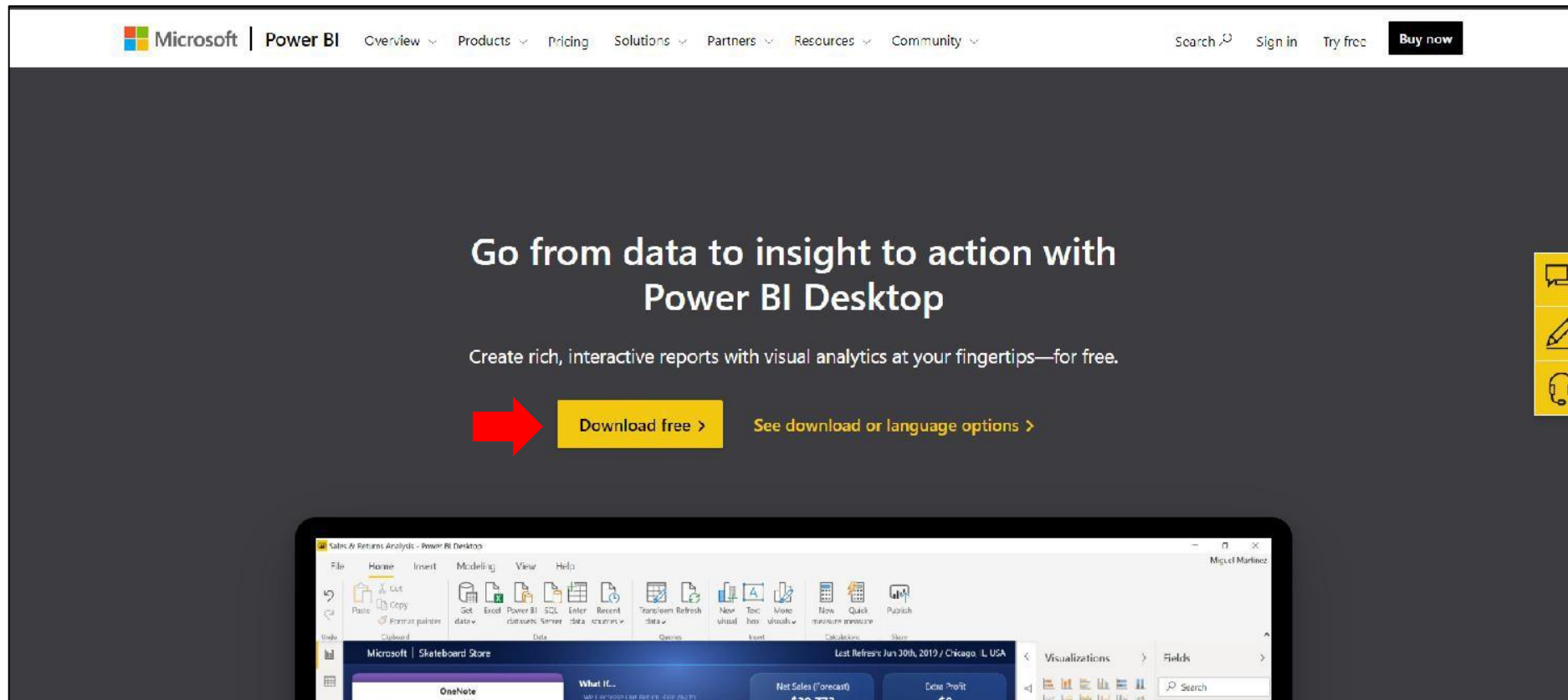
Power BI Desktop is a free download. To get Power BI Desktop, we can Install as an app from the Microsoft Store OR Download directly.

**Download with:**

<https://powerbi.microsoft.com/en-us/desktop>

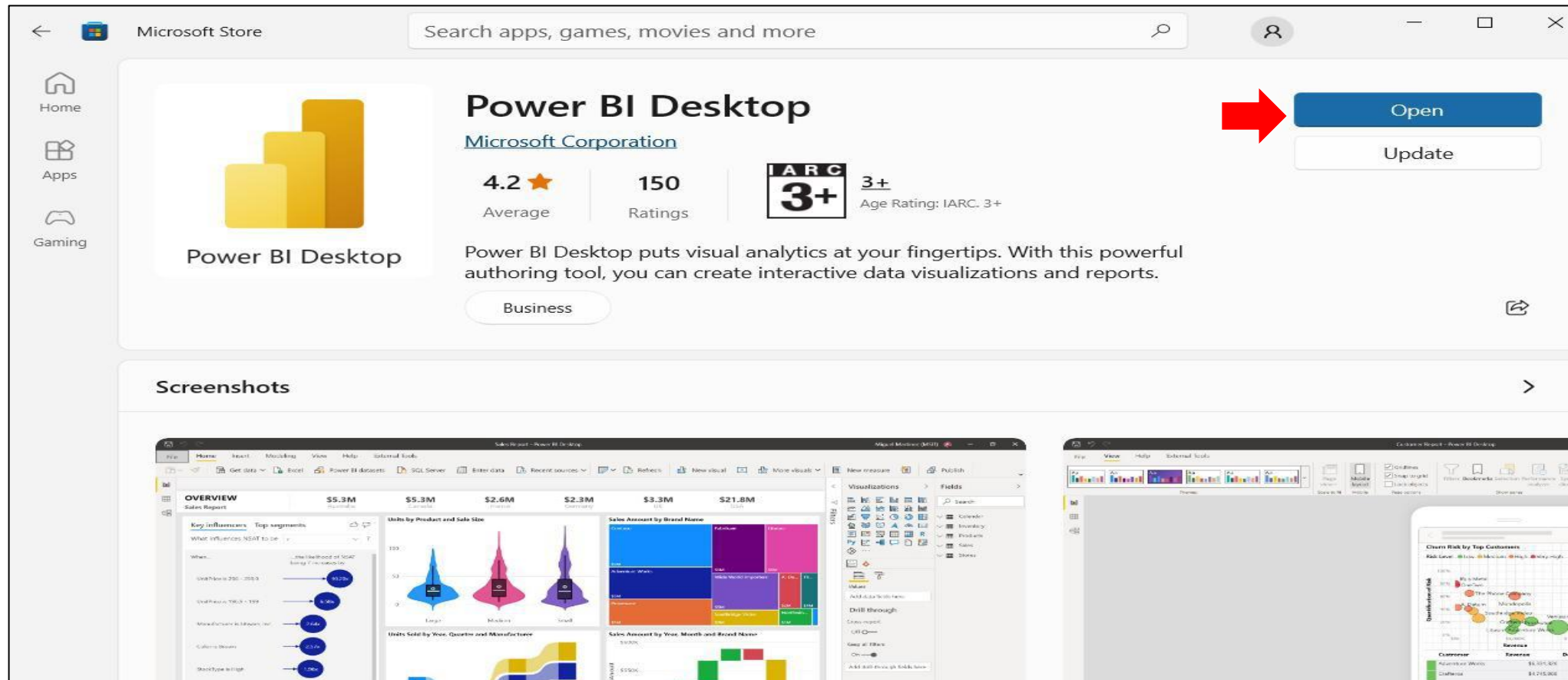


## Step 1: CLICK ON DOWNLOAD FREE



The screenshot shows the Microsoft Power BI website. At the top, there is a navigation bar with the Microsoft logo, 'Power BI', and various menu items like 'Overview', 'Products', 'Pricing', 'Solutions', 'Partners', 'Resources', and 'Community'. On the right side of the navigation bar, there are links for 'Search', 'Sign in', 'Try free', and a 'Buy now' button. The main content area features a large heading: 'Go from data to insight to action with Power BI Desktop'. Below this heading is a sub-heading: 'Create rich, interactive reports with visual analytics at your fingertips—for free.' A red arrow points to a yellow button labeled 'Download free >'. To the right of this button is another yellow button labeled 'See download or language options >'. On the far right edge of the page, there is a vertical sidebar with three icons: a speech bubble, a pencil, and a headset. At the bottom of the page, there is a preview of the Power BI Desktop application interface, showing the ribbon with tabs like 'File', 'Home', 'Insert', 'Modeling', 'View', and 'Help'. The 'Home' tab is active, showing options like 'Get data', 'Excel', 'Power BI', 'SQL database', 'Enter data', 'Recent sources', 'Transform', 'Refresh', 'New visual', 'To: bar', 'More visuals', 'New', 'Quick measure', and 'Publish'. Below the ribbon, there are several data cards and a search bar.

## Step 2: CLICK ON OPEN



The screenshot shows the Microsoft Store interface for the Power BI Desktop application. The app card displays the title "Power BI Desktop" by Microsoft Corporation, a 4.2 star average rating, 150 ratings, and an IARC 3+ age rating. A red arrow points to the "Open" button, which is highlighted in blue. Below the "Open" button is an "Update" button. The "Business" category is also visible. Below the app card, there is a "Screenshots" section showing three preview images of the Power BI Desktop interface.

NOW LET'S HAVE A LOOK ON THE TOOL AND  
LEARN HOW TO USE IT....







**Center of Excellence  
for  
Professional Development**



[www.coepd.com](http://www.coepd.com)

**We helped 12000+ Professionals to live in their BA Career**